

PART OF THE S.W. 1/4 OF SEC. 23, T.5N., R.1W., S.L.B. & M.
HIGHLANDS BLUFF ESTATES SUBDIVISION - PHASE 1

335

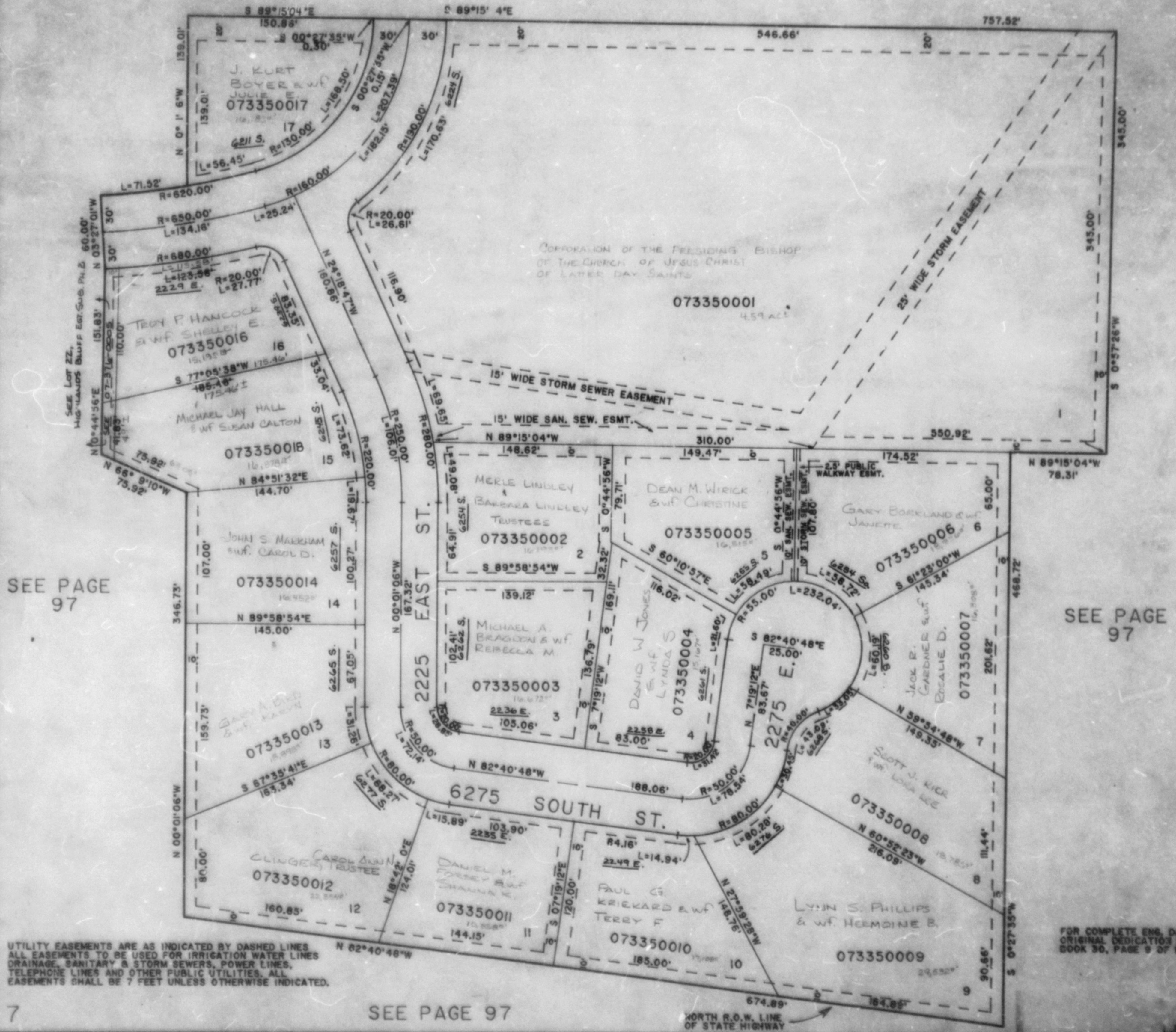
IN WEBER COUNTY

TAXING UNIT: 159

SCALE 1"=60'

EXCEPT WHERE OTHERWISE SHOWN,
 ALL LOTS ARE OWNED BY:
 HIGHLANDS BLUFF DEV. CO., INC.

SEE PAGE 152



SEE PAGE 97

SEE PAGE 97

UTILITY EASEMENTS ARE AS INDICATED BY DASHED LINES.
 ALL EASEMENTS TO BE USED FOR IRRIGATION WATER LINES,
 DRAINAGE, SANITARY & STORM SEWERS, POWER LINES,
 TELEPHONE LINES AND OTHER PUBLIC UTILITIES. ALL
 EASEMENTS SHALL BE 7 FEET UNLESS OTHERWISE INDICATED.

FOR COMPLETE ENG. DATA SEE
 ORIGINAL DEDICATION PLAT IN
 BOOK 30, PAGE 9 OF RECORDS.

7

SEE PAGE 97

NORTH R.O.W. LINE
 OF STATE HIGHWAY

L.D.F. 1-86